

ELPAC

English Language Parent Advisory Council

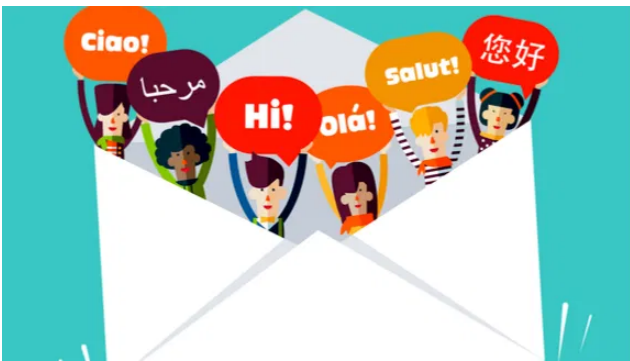
Wednesday, November 10 | 5:00 – 6:00PM

CRLS Main Cafeteria, 459 Broadway

All families of English learners and former English learners are WELCOME!

This Year, ELPAC will...

- Build our ELPAC leadership team
- Expand leadership skills through online *Training Modules* and collaboration
- Plan for 2021-2022



Contact **Aboma Dirbaba**, Amharic Family Liaison, at adirbaba@cpsd.us or 857-331-1199

--or--

Beth Kershner, Director of Bilingual & ELL Programs, at bkershner@cpsd.us to:

- Request an interpreter for ELPAC meetings
- Ask questions about the ELPAC in Cambridge
- Sign up for the ELPAC

ELPAC

English Language Parent Advisory Council

Miercoles, 10 de Noviembre | 5:00 – 6:00PM

CRLS Main Cafeteria, 459 Broadway

Todas las familias que tienen hijos estudiando inglés (SEI & ESL) y los que han salido del programa son bienvenidos!



This Year, ELPAC will...

- Build our ELPAC leadership team
- Expand leadership skills through online *Training Modules* and collaboration
- Plan for 2021-2022

Contactar **Aboma Dirbaba**, Amharic Family Liaison, at adirbaba@cpsd.us or 857-331-1199

--o--

Beth Kershner, Director of Bilingual & ELL Programs, at bkershner@cpsd.us para:

- Solicitar un intérprete para las reuniones del ELPAC
- Haga preguntas sobre el ELPAC en Cambridge
- Inscríbese en el ELPAC

ELPAC

English Language Parent Advisory Council

Quarta-feira, 10 de novembro | 5:00 – 6:00PM

CRLS Main Cafeteria, 459 Broadway

Todas as famílias cujos filhos estudam inglês como segunda língua nos programas SEI & ESL, e também aquelas cujos filhos já deixaram o programa são bem-vindos!



This Year, ELPAC will...

- Build our ELPAC leadership team
- Expand leadership skills through online *Training Modules* and collaboration
- Plan for 2021-2022

Entre em contacto com **Aboma Dirbaba**, Amharic Family Liaison, at adirbaba@cpsd.us or 857-331-1199

--OU--

Beth Kershner, Director of Bilingual & ELL Programs, at bkershner@cpsd.us para:

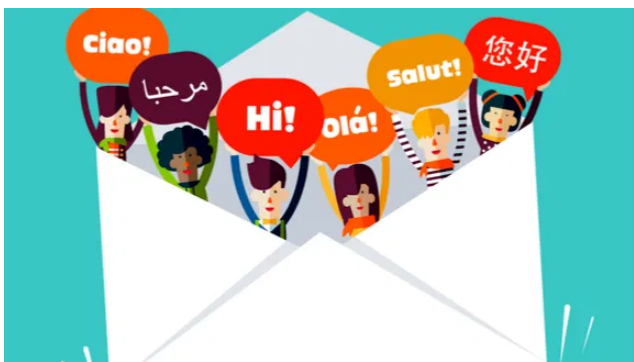
- Solicitar um intérprete para as reuniões da ELPAC
- Fazer perguntas sobre a ELPAC em Cambridge
- Registrar para ELPAC

ELPAC

English Language Parent Advisory Council

Mèkredi 10 novanm | 5:00 - 6:00PM
CRLS Main Cafeteria, 459 Broadway

Tout fanmi ki gen timoun k ap etidye angle (SEI & ESL) ak moun ki te soti nan pwogram nan yo akeyi!



This Year, ELPAC will...

- Build our ELPAC leadership team
- Expand leadership skills through online *Training Modules* and collaboration
- Plan for 2021-2022

Kontakte **Aboma Dirbaba**, Amharic Family Liaison, at adirbaba@cpsd.us or 857-331-1199

--oswa--

Beth Kershner, Director of Bilingual & ELL Programs, at bkershner@cpsd.us pou:

- Mande yon entèprèt pou reyinyon ELPAC
- Poze kesyon sou ELPAC nan Cambridge
- Enskri pou ELPAC

ELPAC

English Language Parent Advisory Council

Wednesday, November 10 | 5:00 – 6:00PM

CRLS Main Cafeteria, 459 Broadway

نرحب بجميع العائلات التي لديها أطفال في برنامج اللغة الإنجليزية (ESL) و CSEI أو لديها أطفال خرجوا من البرنامج!

ستقوم ELPAC هذا العام ...

- بناء فريق القيادة ELPAC
- توسيع مهارات القيادة من خلال وحدات التدريب والتعاون عبر الإنترنت
- الخطة لعام 2021 - 2022

للتواصل مع Aboma Derbaba مسؤول الاتصال العائلي

adirbaba@cpsd.us أو 1199-857-331-
--أو--

Beth Kershner ، مديرة البرامج ثنائية اللغة ومتعلمي اللغة الإنجليزية ، على
: bkershner@cpsd.us

- اطلب مترجمًا للاجتماعات ELPAC
- اطرح أسئلة حول ELPAC في كامبريدج
- اشترك في ELPAC



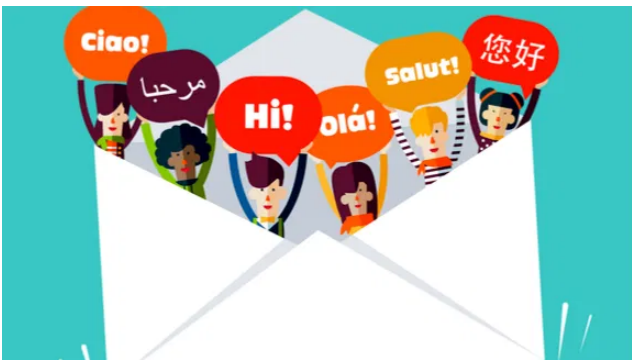
ELPAC

English Language Parent Advisory Council

Wednesday, November 10 | 5:00 – 6:00PM

CRLS Main Cafeteria, 459 Broadway

በአሁኑ ጊዜ በ SEI እና ESL ፕሮግራሞች ውስጥ ልጆች ያሏቸው ወይም ከፕሮግራሙ የወጡ ቤተሰቦች በሙሉ እንኳን ደህና መጡ!



This Year, ELPAC will...

- Build our ELPAC leadership team
- Expand leadership skills through online *Training Modules* and collaboration
- Plan for 2021-2022

አገማ ድርገገን የአማርኛ ቤተሰብ ግንኙነትን በ
adirbaba@cpsd.us ወይም 857-331-1199 ያግኙ።

--ወይ--

ቤተሰብ ክርሽነር፣ የሁለት ቋንቋ ተናጋሪ እና ኤልኤል ፕሮግራሞች
ዳይሬክተር፣ በ bkershner@cpsd.us ወይ፡-

- ለELPAC ስብሰባዎች አስተርጓሚ ይጠይቁ
- በካምብሪጅ ውስጥ ስለ ELPAC ጥያቄዎችን ይጠይቁ
- ለELPAC ይመዘገቡ