

# Welcome to the CRLS Senior College & Career Planning Night



**FOR A PARENT'S  
PERSPECTIVE**

# What To Do After CRLS?



- There is no “right” path to take
  - Vocational Training
  - Certificate Programs
  - Employment
  - Military
  - 2 Year Colleges
  - Gap Year Opportunities
  - 4 Year Colleges



# Unsure about 4 year schools?



- Many programs offer on the job training with college credits that students can transfer
  - Job-Corps, Year-Up, JVS, Cambridge Works, Next Up
- Mass Transfer
  - Start at community college, guaranteed admissions to state universities, guaranteed transfer of credits, discounted tuition rates
- Experience
  - Internships, City Year, Gap Years

# Naviance-The link to us all

- What is Naviance?

- Best way for parents to stay in the loop between student and counselor
- Students will be required to maintain their college list
- Students will be required to indicate which teachers they have asked for recommendations
- Guidance sends recommendations and transcripts through Naviance. \*List must be accurate\*
  - ✦ If you do not have an account yet, email Guidance Counselor

# Important Time Periods for College Apps

Sept-Dec: College research/applications

Oct 1: FAFSA & CSS Profile starts

Nov 1-15: Early Application Season (CSS Profile due at early deadline)

Jan 1-March: Regular Application Season

Jan 1: Finalize FAFSA & CSS Profile

April 1: Acceptance/Waitlist/Rejection

April 15: Financial Aid Packets

May 1: Deposit to college attending

# Types of Applications:

Types of Application	Restrictions	Timeframe
Early Action	No Restrictions	November/December
Restrictive Early Action	Each college varies – often not able to apply to other private schools early	November
Early Decision I	Binding – If accepted, student will attend	November
Early Decision II	Binding – If accepted, student will attend	January
Regular	No Restrictions	October- June
Rolling	No Restrictions	October - June

# Overview of Application Profile



- **Transcript**
- GPA (1<sup>st</sup> qtr, mid-year, and final grades)
- Essay/Personal Statement
- Recommendations
- Standardized Testing
- Extracurricular Activities
- What does the student have to offer?



# Standardized Testing

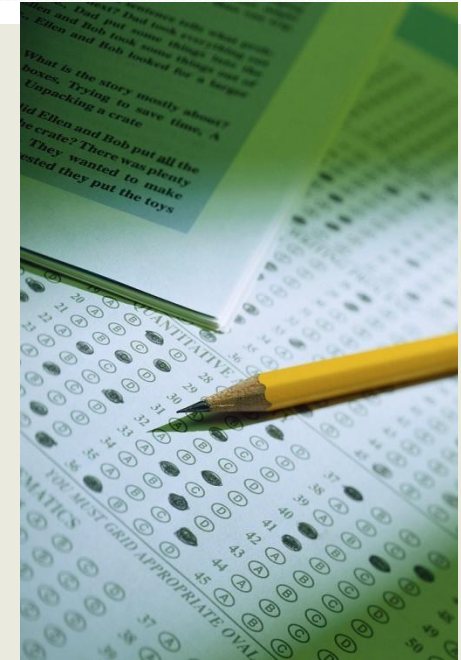


## Most Commonly Required

- SAT Reasoning Test
- ACT (with writing)

## Possibly Required

- TOEFL
- SAT Subject Tests –minimum of 2



**Prepare!!**



# Standardized Tests

Test	Test Date	Regular Deadline	Late Deadline
SAT	August 24, 2018	July 26, 2019	August 13, 2019
ACT	September 14, 2019	August 16, 2019	August 30, 2019
SAT	October 5, 2019	September 6, 2019	September 24, 2019
ACT	October 26, 2019	September 20, 2019	October 4, 2019
SAT	November 2, 2019	October 3, 2019	October 22, 2019
SAT	December 7, 2019	November 8, 2019	November 26, 2019
ACT	December 14, 2019	November 8, 2019	November 22, 2019
ACT	February 8, 2020	January 10, 2020	January 17, 2020
SAT	March 14, 2020	February 14, 2020	March 3, 2020
ACT	April 4, 2020	February 28, 2020	March 13, 2020
SAT	May 2, 2020	April 3, 2020	April 21, 2020
SAT	June 6, 2020	May 8, 2020	May 27, 2020
ACT	June 18, 2020	May 8, 2020	May 22, 2020

# Sending Scores



- When required, Students must send official test scores through College Board/ACT. Guidance Counselor does NOT send test scores.
- Most colleges will “super score” – check school’s website for specific information
- Listing scores on the Common App is optional. If a student chooses to enter them, all schools will see scores.

**\*\*GUIDANCE COUNSELORS ARE NOT ABLE TO SEND SCORES\*\***

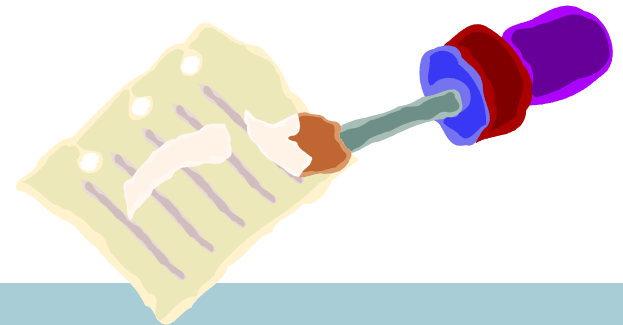
# Application Process

- [www.commonapp.org](http://www.commonapp.org)
  - Application
  - Essay
    - ✦ 650 words maximum
    - ✦ Do not use college name
  - Supplements
  - Application Fee
  - If you qualify for SAT fee waiver, you are eligible for application fee waivers through Common App



# Essay/Personal Statement

- Student's chance to express creativity and to show personality.
- Make sure you have someone review essay
- Must be the STUDENT's voice
- Essay Help
  - Cambridge School Volunteers (Wednesdays)
  - Teachers
  - Guidance (content)



# Recommendations

## • Teacher Recommendations

- ✦ Most colleges require two
- ✦ Students should complete Brag Sheets 1 month prior to first deadline
- ✦ Students should make teachers aware of deadlines and check in periodically

## • Guidance

- ✦ Student Brag Sheet – required 1 month prior to first deadline
- ✦ **Parent Brag Sheet – recommended**

## • Outside Recommendations (NOT required and often not allowed)

- ✦ Student is responsible to send on their own



# Finalizing a College List

- **Reach, Match, Likely choices**
  - Realistic list that meets student's academic profile
  - Amount of schools to which to apply?
  - Avoid the name game – focus on matching
  - Identify “Likely” schools
- **Interviews & Visits**
  - CRLS College Fair – First Wednesday in October
  - College visits to CRLS – Naviance
  - Alumni visits for distant colleges
- **Size, location, programs, majors, courses, student body, and campus/facilities**



Overview

Studies

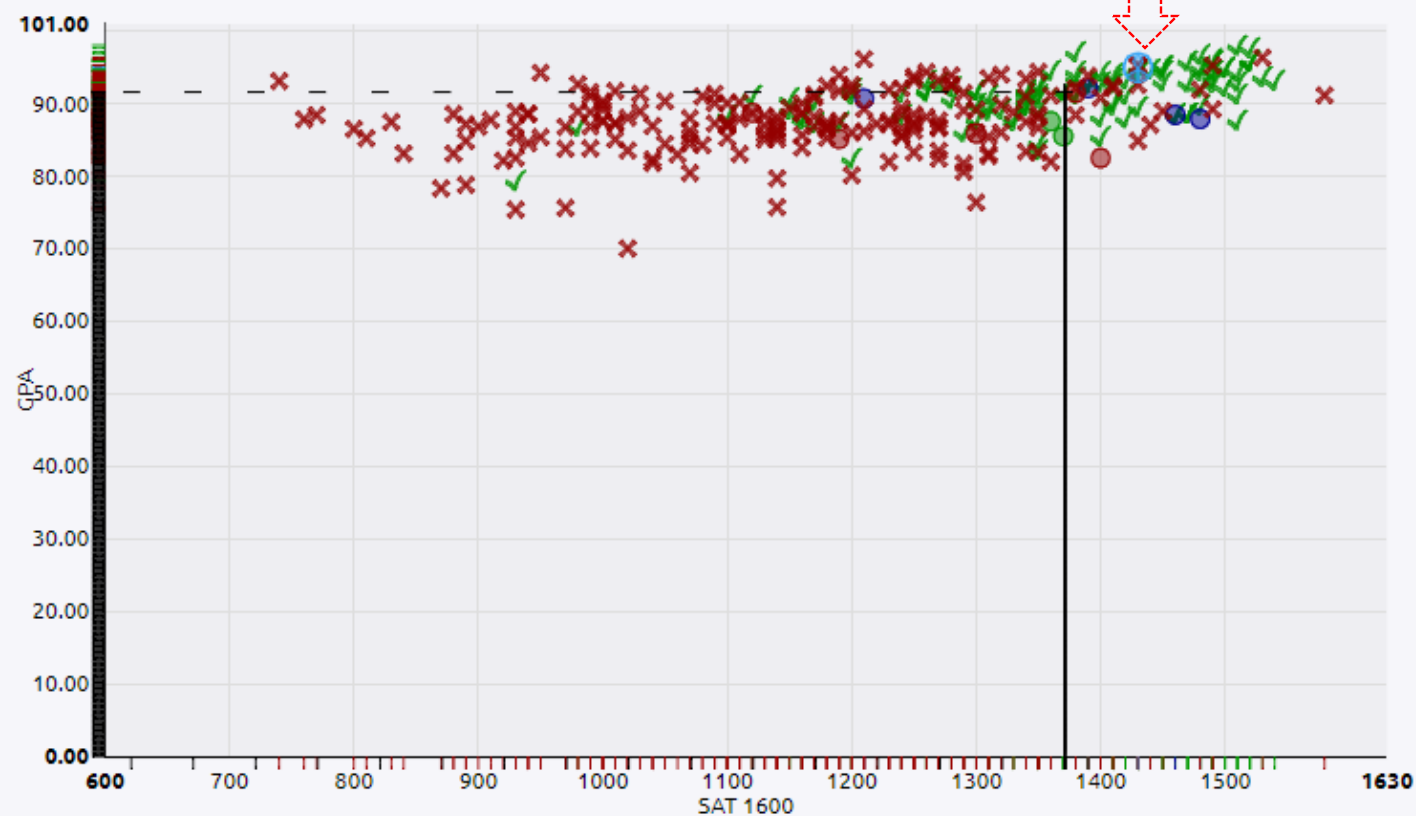
Student Life

Admissions

Costs

## Scattergrams | Applications for Cambridge Rindge &amp; Latin School ⓘ

Comparing Unweighted GPA with SAT (1600 Scale) ▼



Legend



You

Accepted



Waitlisted/Accepted



Waitlisted/Unknown



Waitlisted/Denied



Denied



# Test Scores & GPA Ranges

Your High School's Ranges

National Ranges

Compare your scores with students from your school who have been accepted to Boston University.

Needs Improvement		Fair ★		Good ★		Great ★★	
		Low	Average	High	Your Score		
› ACT Combined		22	29	35	--		
› SAT Converted Combined		900	1358	1600	1430 ★		
› SAT 1600 Combined		1010	1363	1600	--		
› SAT 2400 Combined		1210	1918	2320	2040 ★		
› GPA Cumulative		71.08	91.1	98.14	95 ★		



# Responsibilities

Student	Guidance/School	Parent
<ul style="list-style-type: none"> <li>•Check email and follow up with colleges</li> <li>•Submit applications, essays and fees</li> <li>•Have SAT scores sent directly from the College Board to all colleges</li> <li>•Know application deadlines</li> <li>•Submit required financial aid forms</li> <li>•Submit outside recommendations if needed</li> </ul>	<ul style="list-style-type: none"> <li>•Provide college counseling re: appropriate Reach, Match, Likely choices</li> <li>•Write college recommendation (no brag sheet, no rec!)</li> <li>•Send Transcripts, Profile, and all CRLS Recommendations</li> </ul>	<p>Supporting your child throughout</p> <p>Financial Support With:</p> <ul style="list-style-type: none"> <li>•Application fees</li> <li>•SAT/ACT registration</li> <li>•SAT scores sent to colleges</li> <li>•FAFSA application</li> <li>•CSS Profile</li> <li>•Negotiate with Financial Aid offices</li> <li>•May 1<sup>st</sup> deposit</li> </ul>
<p align="center">**Remember that it is your child going to college**</p>		

# Other Things You Will Need



- **Locate Important Documents**
  - Social Security Card
  - Passport/Birth Certificate
  - Tax Records for student and parent
- **Get a State Photo ID**
- **Name should match all official documents**



\$\$\$



## ● Net Price Calculator

## ● Financial Aid

- CSS Profile for selected private colleges
  - ✦ <https://profileonline.collegeboard.com> beginning October 1st
  - ✦ Deadlines vary
- FAFSA
  - ✦ [www.fafsa.ed.gov](http://www.fafsa.ed.gov)
- Help?
  - ✦ **uAspire – CCRC Tuesday – Friday 9 – 3:30**
    - Omar Laaroussi
      - [omarl@uaspire.org](mailto:omarl@uaspire.org)
  - ✦ Financial Aid Night September 19<sup>th</sup>

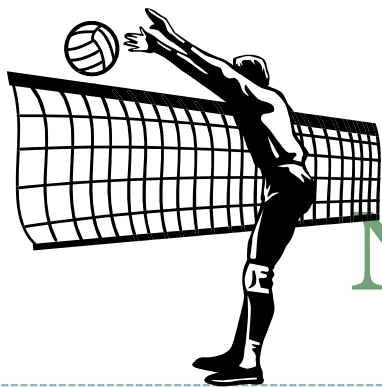
## ● Scholarships (free money!)

- Naviance – links to national scholarship searches
- CRLS/City of Cambridge Scholarships online in January

# Decisions, decisions...



- April 1<sup>st</sup>-National Decision Day for Colleges
  - One month to decide between accepted colleges
  - Comparing financial packages from accepted colleges
- April 15<sup>th</sup> financial aid packages
- May 1<sup>st</sup>: Deposit to college with intention to attend



# NCAA Clearinghouse



ALL POTENTIAL DIVISION 1 OR 2 ATHLETES MUST  
REGISTER WITH THE ELIGIBILITY CENTER AT:

**[WWW.ELIGIBILITYCENTER.ORG/](http://WWW.ELIGIBILITYCENTER.ORG/)**



***TALK TO YOUR COACH!!***





# Questions?

Thank you!  
CRLS Guidance

