



# Cambridge Public Schools Recycling Performance October 2017

School	Enrollment	Total Recycling (pounds)	Total Recycling Per Student (pounds)	% Reports Received
Morse	307	4,088	13.3	100%
Cambridgeport	344	4,200	12.2	100%
Kennedy-Longfellow/ Cambridge Street Upper School	542	6,450	11.9	100%
Peabody/Rindge Ave Upper School	593	3,750	11.5	75%
Baldwin	366	4,200	11.5	100%
Graham & Parks	364	3,863	10.6	80%
Amigos	397	3,975	10	100%
ML King/Putnam Ave Upper School	589	5,438	9.2	100%
CRLS	1,943	17,175	8.8	100%
King Open/Extension School	368	3,225	8.8	100%
Tobin/Vassal Lane Upper School	576	4,725	8.2	100%
Fletcher Maynard	298	2,136	7.2	7%
Haggerty	256	1,800	7.0	100%

**TOTAL RECYCLING: 65,025 pounds** *Let's keep it up!*

Recycling weights are based on weekly reports sent to DPW by the schools.  
Contact: Meryl Brott, 617-349-4836, [mbrott@cambridgema.gov](mailto:mbrott@cambridgema.gov).

**Thank you for recycling and composting!**

Your efforts protect animals and nature,  
curb climate change and save the city money.



# Wow!

## 353 Tons Recycled!

In the 2016-17 school year, students, staff and teachers recycled 353 TONS of empty containers, paper and cardboard!

### These recycling efforts saved:



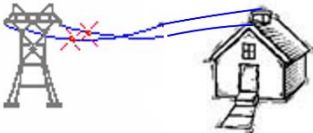
5,409 Trees



707 Barrels of Oil



2.4 Million Gallons of Water



247 Households' Worth of Electricity Use



47 Truck Loads of Trash



Additionally, 530 tons of carbon dioxide were prevented from being released, and the creation of methane in the landfill was avoided.



***Have questions about recycling, composting or reducing waste?  
Would you like a classroom presentation about these topics?***

Please contact Meryl at DPW: 617-349-4836 / [mbrott@cambridgema.gov](mailto:mbrott@cambridgema.gov).