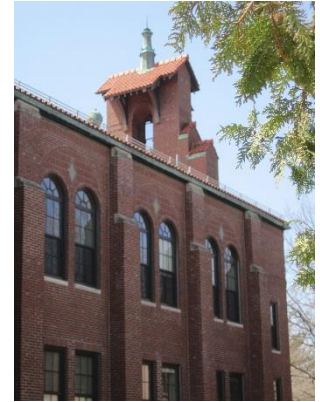




Affordable, accessible rental units available in Cambridge

Community Development Department,
Housing Division



The City of Cambridge Inclusionary Housing Rental Program is accepting applications for 1- & 2- bedroom, wheelchair accessible apartments.

Applicants who require a wheelchair accessible unit are encouraged to apply to the City's **rental** program.

Find out if you are income eligible, and apply today! Applications will be accepted on a rolling basis.

Visit www.cambridgema.gov/housing for more information.



The City of Cambridge Community Development Department does not discriminate on the basis of disability. The Department will provide auxiliary aids and services, written materials in alternative formats, and reasonable modifications in policies and procedures to persons with disabilities upon request.

