



MIT Museum & Akamai present
MIT Science on Saturday



Planets: Pluto and Beyond

Saturday, October 17, 2015

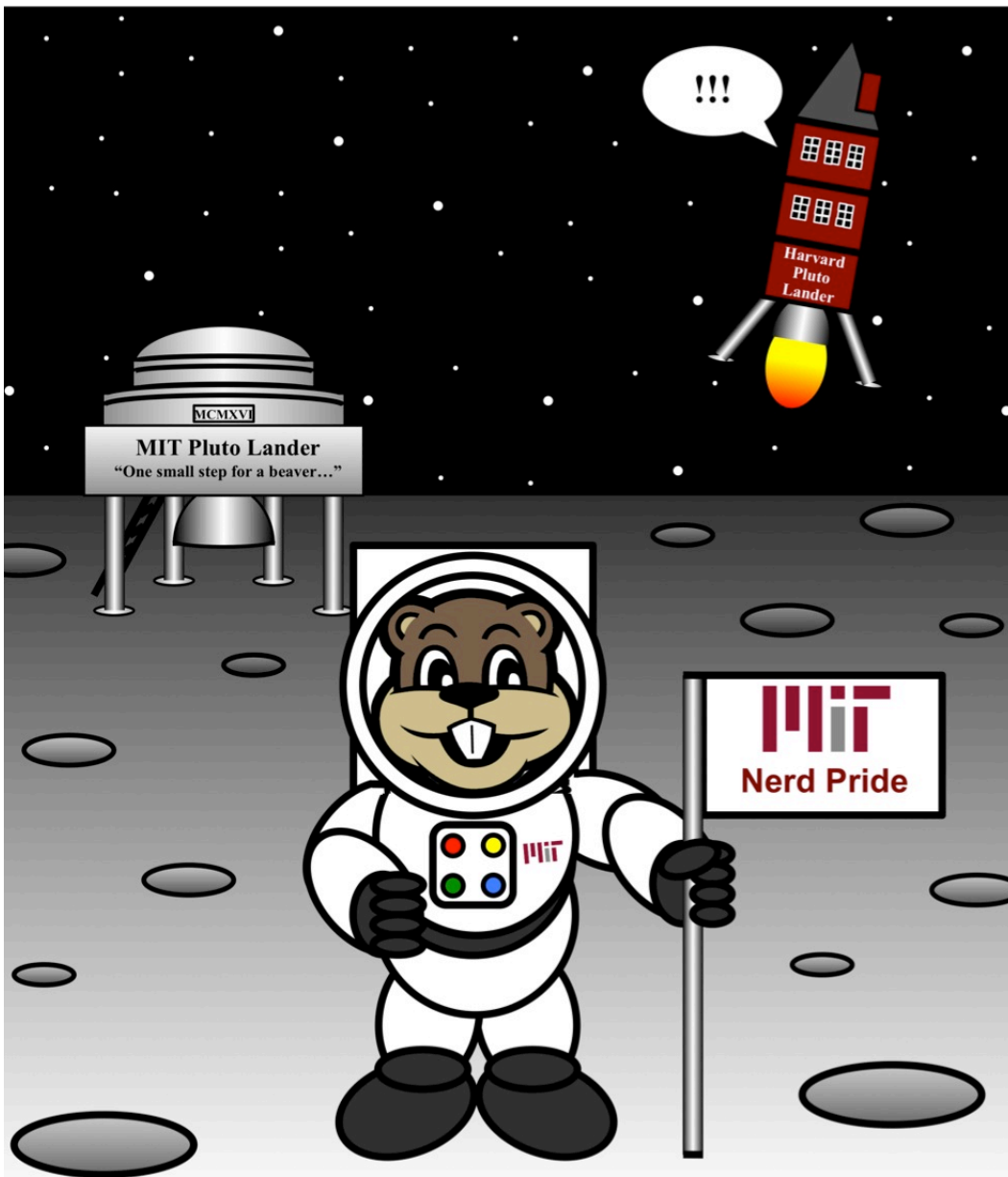
MIT Kresge Auditorium

Main presentation 10:00-11:00 a.m.

48 Massachusetts Ave.

+ hands-on activities 11:00 a.m.-noon

Cambridge, MA 02139



Presented by
MIT Dept.
of Earth,
Atmospheric,
& Planetary
Sciences

FREE!
Open to all
K-12 students,
as well as
their parents
and teachers

No
preregistration
required, but
seating is
limited—
first come,
first seated

Half-price, same-day admission to MIT Museum for SoS attendees.

Map & parking information at

http://web.mit.edu/museum/programs/calendar/sci_on_saturday.html

Any questions? Email Dr. Todd H. Rider, thor@mit.edu



MIT Museum & Akamai present
MIT Science on Saturday



**Upcoming shows (all on
Saturdays 10 a.m.-noon):**

October 17, 2015

December 5, 2015

February 6, 2016

March 5, 2016

April 2, 2016

All shows in MIT's Kresge Auditorium

**\$6 parking with credit card in
West Garage (closer but may fill up)
or Albany St. Garage (further)**

**MBTA buses to Mass. Ave (closer) or
subway to Central or Kendall Sq. (further)**

**[http://web.mit.edu/museum/programs/
calendar/sci_on_saturday.html](http://web.mit.edu/museum/programs/calendar/sci_on_saturday.html)**

Dr. Todd H. Rider, thor@mit.edu

Half-price, same-day admission to MIT Museum for SoS attendees





MIT Museum & Akamai present
MIT Science on Saturday



Nuclear Science & Engineering

Saturday, December 5, 2015

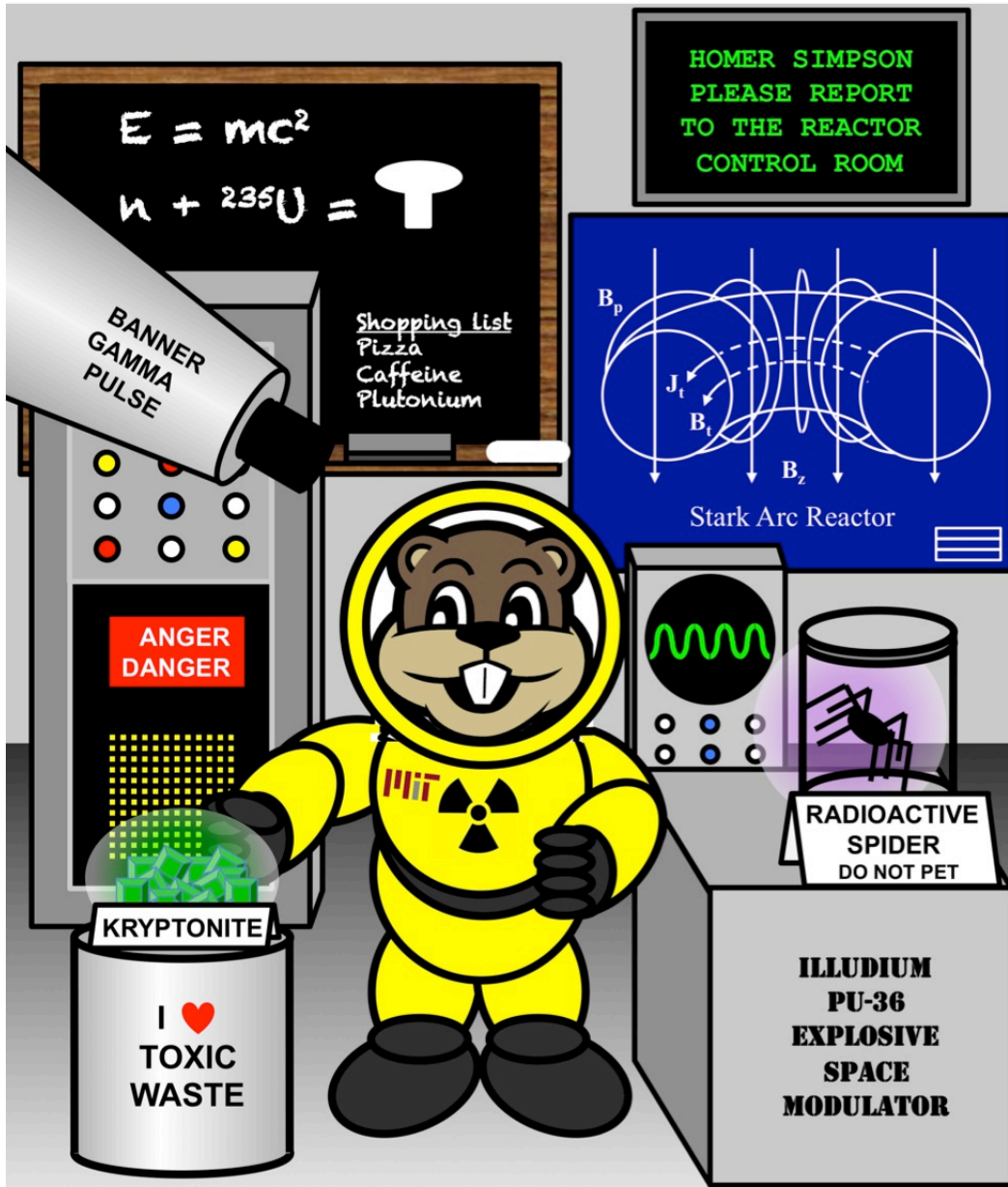
MIT Kresge Auditorium

Main presentation 10:00-11:00 a.m.

48 Massachusetts Ave.

+ hands-on activities 11:00 a.m.-noon

Cambridge, MA 02139



Presented by
MIT Dept.
of Nuclear
Science &
Engineering

FREE!
Open to all
K-12 students,
as well as
their parents
and teachers

No
preregistration
required, but
seating is
limited—
first come,
first seated

Half-price, same-day admission to MIT Museum for SoS attendees.

Map & parking information at

http://web.mit.edu/museum/programs/calendar/sci_on_saturday.html

Any questions? Email Dr. Todd H. Rider, thor@mit.edu



MIT Museum & Akamai present

MIT Science on Saturday



Rockets and Flight

Saturday, February 6, 2016

MIT Kresge Auditorium

Main presentation 10:00-11:00 a.m.

48 Massachusetts Ave.

+ hands-on activities 11:00 a.m.-noon

Cambridge, MA 02139



Presented by
MIT Dept. of
Aeronautics &
Astronautics

FREE!
Open to all
K-12 students,
as well as
their parents
and teachers

No
preregistration
required, but
seating is
limited—
first come,
first seated

Half-price, same-day admission to MIT Museum for SoS attendees.

Map & parking information at

http://web.mit.edu/museum/programs/calendar/sci_on_saturday.html

Any questions? Email Dr. Todd H. Rider, thor@mit.edu



MIT Museum & Akamai present

MIT Science on Saturday



MATERIALS WITH MAGICAL PROPERTIES

Saturday, March 5, 2016

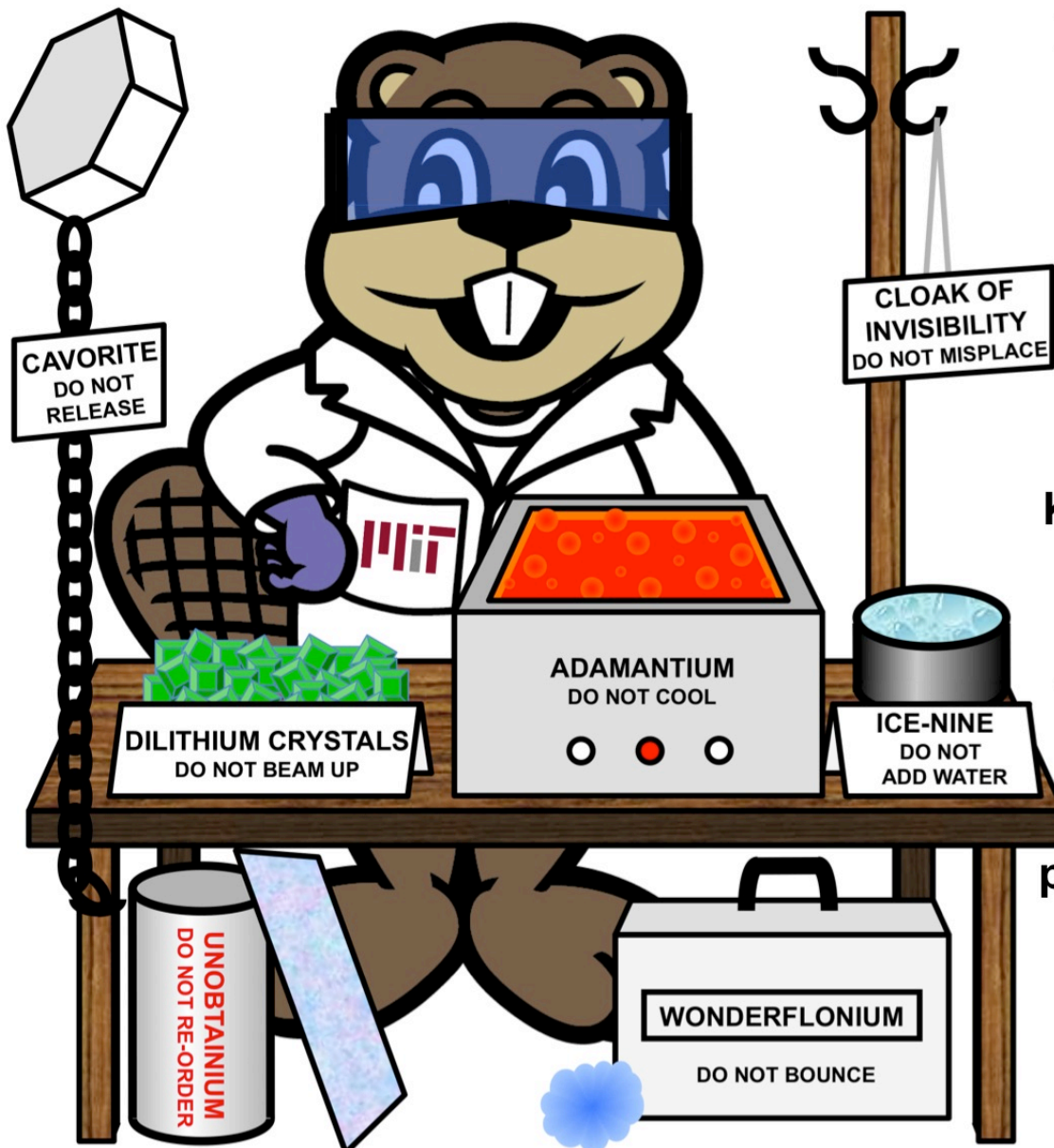
MIT Kresge Auditorium

Main presentation 10:00-11:00 a.m.

48 Massachusetts Ave.

+ hands-on activities 11:00 a.m.-noon

Cambridge, MA 02139



Presented by
MIT Dept. of
Materials
Science &
Engineering

FREE!
Open to all
K-12 students,
as well as
their parents
and teachers

No
preregistration
required, but
seating is
limited—
first come,
first seated

Half-price, same-day admission to MIT Museum for SoS attendees.

Map & parking information at

http://web.mit.edu/museum/programs/calendar/sci_on_saturday.html

Any questions? Email Dr. Todd H. Rider, thor@mit.edu



MIT Museum & Akamai present
MIT Science on Saturday



CIRCUITS & COMPUTERS

Saturday, April 2, 2016

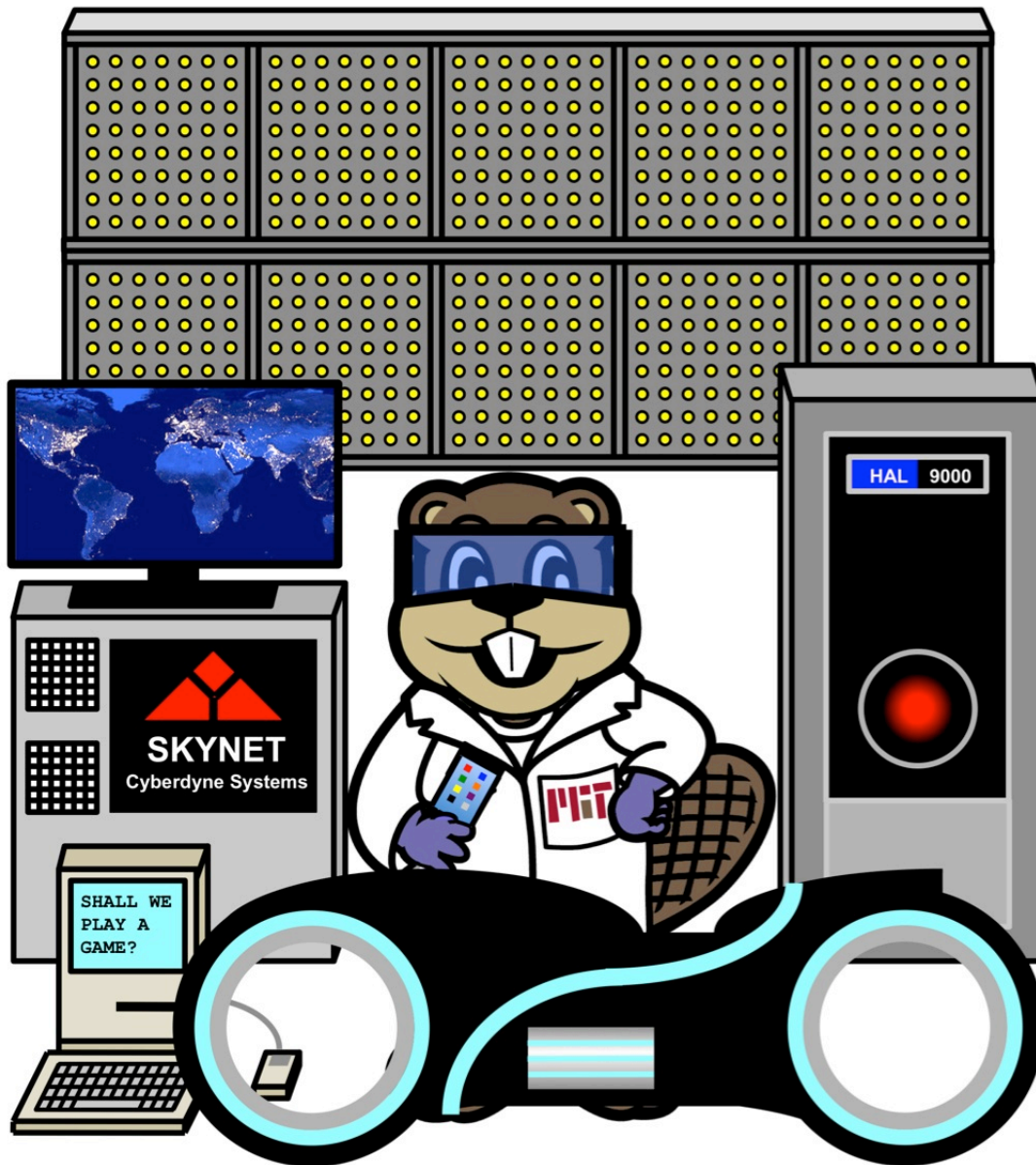
MIT Kresge Auditorium

Main presentation 10:00-11:00 a.m.

48 Massachusetts Ave.

+ hands-on activities 11:00 a.m.-noon

Cambridge, MA 02139



Presented by
MIT Dept. of
Electrical
Engineering
& Computer
Science

FREE!
Open to all
K-12 students,
as well as
their parents
and teachers

No
preregistration
required, but
seating is
limited—
first come,
first seated

Half-price, same-day admission to MIT Museum for SoS attendees.

Map & parking information at

http://web.mit.edu/museum/programs/calendar/sci_on_saturday.html

Any questions? Email Dr. Todd H. Rider, thor@mit.edu